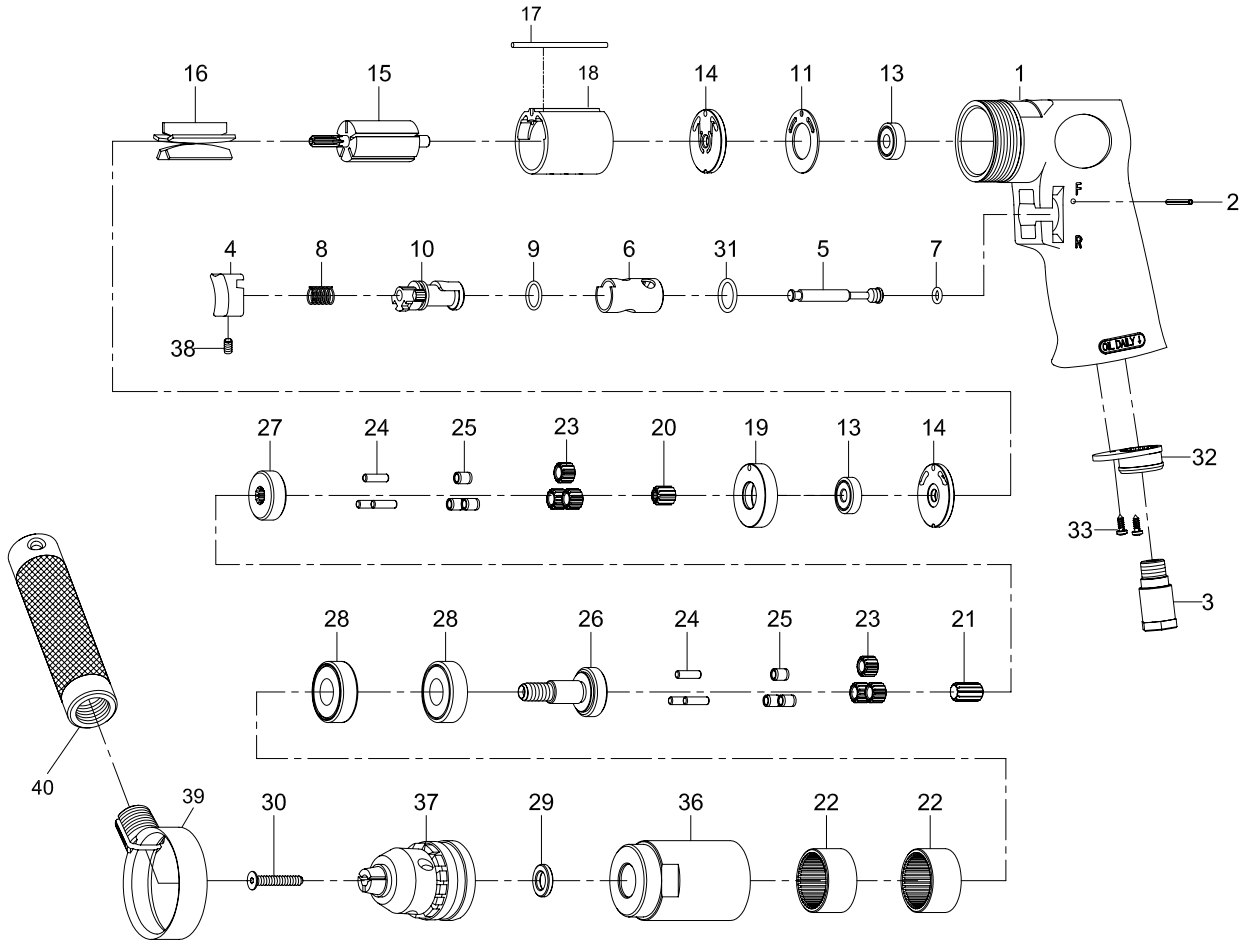


1/2" REVERSIBLE DRILL



Index No.	Parts No.	Description	Index No.	Parts No.	Description
1	80201	Motor Housing	21	70421	Center Gear
2	80202	Spring Pin (Ø2.5*24L)	22	80222	Internal Gear (2)
3	70103	Air Inlet	23	70423	Planet Gear (6)
4	70104	Trigger	24	30124	Pin (6) (Ø4*13.8L)
5	80205	Valve Stem	25	70425	Bushing (6)
6	80206	Reverse Bushing	26	70426	Work Spindle
7	70107	O-Ring (Ø4.8*Ø1.9)	27	70427	Reduction Spindle
8	70108	Valve Spring	28	080227	Ball Bearing (2) (6201Z)
9	80209	O-Ring (Ø12*Ø1.6)	29	70133	Chuck Spacer
10	80210	Reverse Lever	30	70430-12	Chuck Screw (M5*30L)
11	80211	Motor Gasket	31	80247	O-Ring (Ø13.8*Ø2)
13	030113	Ball Bearing (2) (626ZZ)	32	70110	Exhaust Diffuser
14	80214	End Plate (2)	33	40309	Screw (2) (TS2.9)
15	80215	Rotor	36	70436	Clamp Nut
16	80216	Rotor Blades (5)	37	10033-11	Key Chuck (1/2")
17	80217-13	Spring Pin (Ø2.5*55L)	38	70935	Set Screw (M4*8L)
18	80218-22	Cylinder	39	70439	Retainer
19	80219	Spacer	40	70340	Handle
20	70420	Pinion Gear			