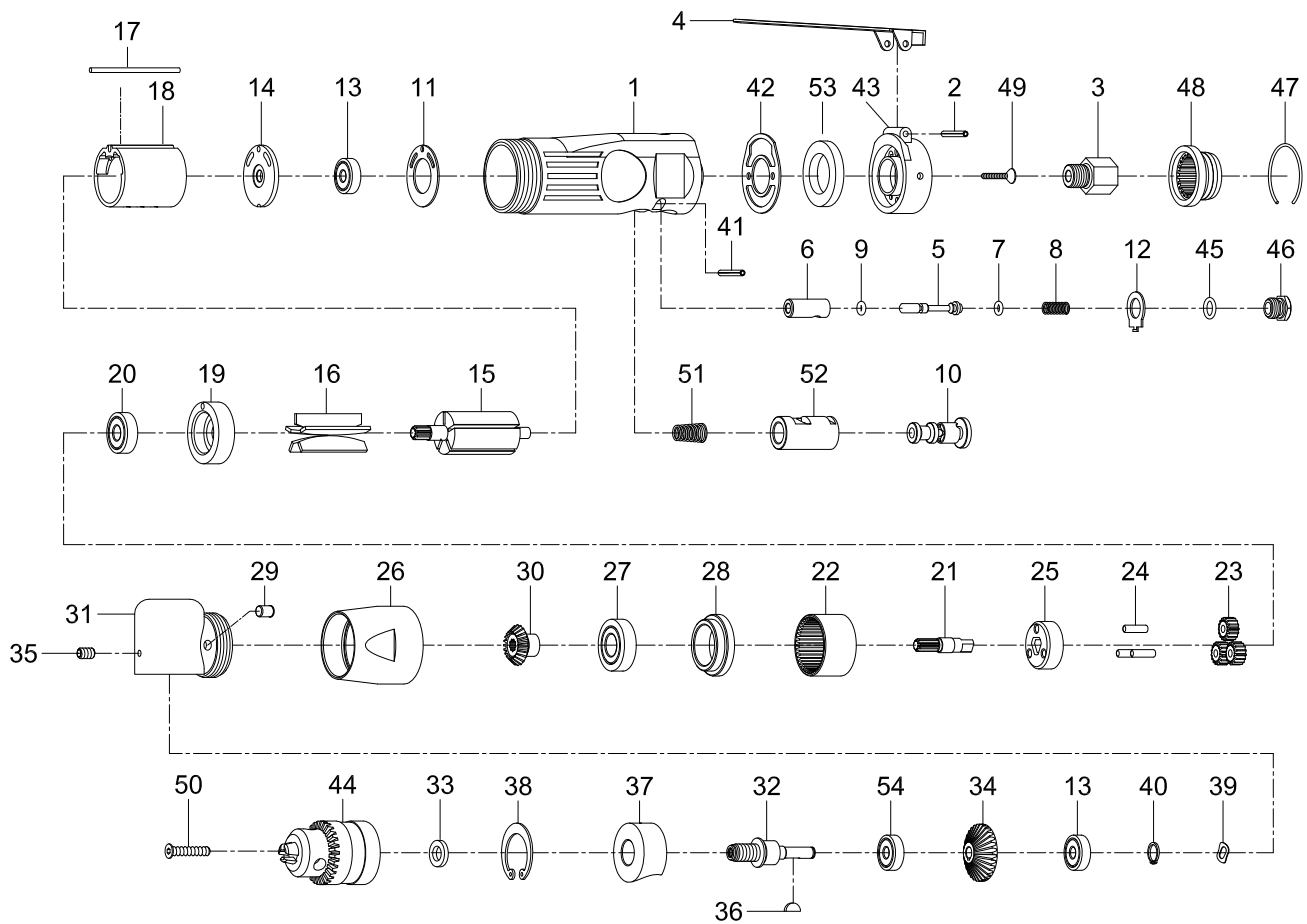


3/8" REVERSIBLE ANGLE DRILL



Index No.	Parts No.	Description	Index No.	Parts No.	Description
1	84201	Motor Housing	28	70928R	Spacer
2	30102	Spring Pin (Ø3*24L)	29	56237	Oil Cap (3/16")
3	51203	Air Inlet	30	70930R	Pinion
4	84204	Throttle Lever	31	70931R	Angle Housing
5	84205	Valve Stem	32	70932RN	Spindle
6	84206	Valve	33	70133	Washer
7	OR00305200	O-Ring (3.5x2.0)	34	70934R	Gear
8	30108	Spring	35	70122	Set Screw (M4*6L)
9	84209	O-Ring (Ø2*Ø1.5)	36	70936R	Key
10	84210	Reverse Lever	37	70937R	Bearing Cap
11	80211	Motor Gasket	38	70938	Retainer Ring (RTW-32)
12	84212	Reverse Retainer	39	63049	Wave Washer (WW-6)
13	030113	Ball Bearing (2) (626ZZ)	40	72012	Retainer Ring (STW-6)
14	80214	End Plate	41	40337	Spring Pin (Ø3*18L)
15	70915R	Rotor	42	84254	Rear Gasket
16	80216	Rotor Blades (5)	43	84255	Rear Cover
17	80217-13	Spring Pin (Ø2.5*55L)	44	10035-11	Key Chuck (3/8")
18	80218-22	Cylinder	45	40134	O-Ring (P8)
19	70919R	Front End Plate	46	84246	Throttle Valve Plug
20	030120	Ball Bearing (608ZZ)	47	51229	Retainer Ring (Ø1.2*Ø35)
21	70921R	Shaft	48	51206	Exhaust Deflector
22	70922R	Internal Gear	49	84249	Screw (2) (M3*15L)
23	30123	Planet Gear (3)	50	70530	Screw (M5*25)
24	30124	Pin (3) (Ø4*13.8L)	51	84251	Spring
25	70925R	Cage	52	84252	Reverse Bushing
26	70926R	Lock Ring	53	51230	Muffler
27	040313	Ball Bearing (6001)	54	051825	Ball Bearing (607ZZ)

709R-0001